

Source: <http://www.slideserve.com/brina/nfhs-soccer-dual-system-mechanics>

# Referee Team Pre-game

- Inspect field/players together
- Determine lead/trail directions (left or rt.)
- Decide touchline/goal line responsibilities
- Review proper mechanics/techniques
- Emphasize eye contact; consult if needed
- Simultaneous whistle – defer to head ref
- Coordination Issues
  - ◆ Substitutions
  - ◆ Injuries
  - ◆ Restarts

## Making the Call Responsibility for Restart Whistle



### Trail whistles start

Kickoff(s)  
Drop Ball ?  
Goal Kick  
Throw In (Trail side)  
Penalty Kicks  
Subs – official responsible for restart whistles

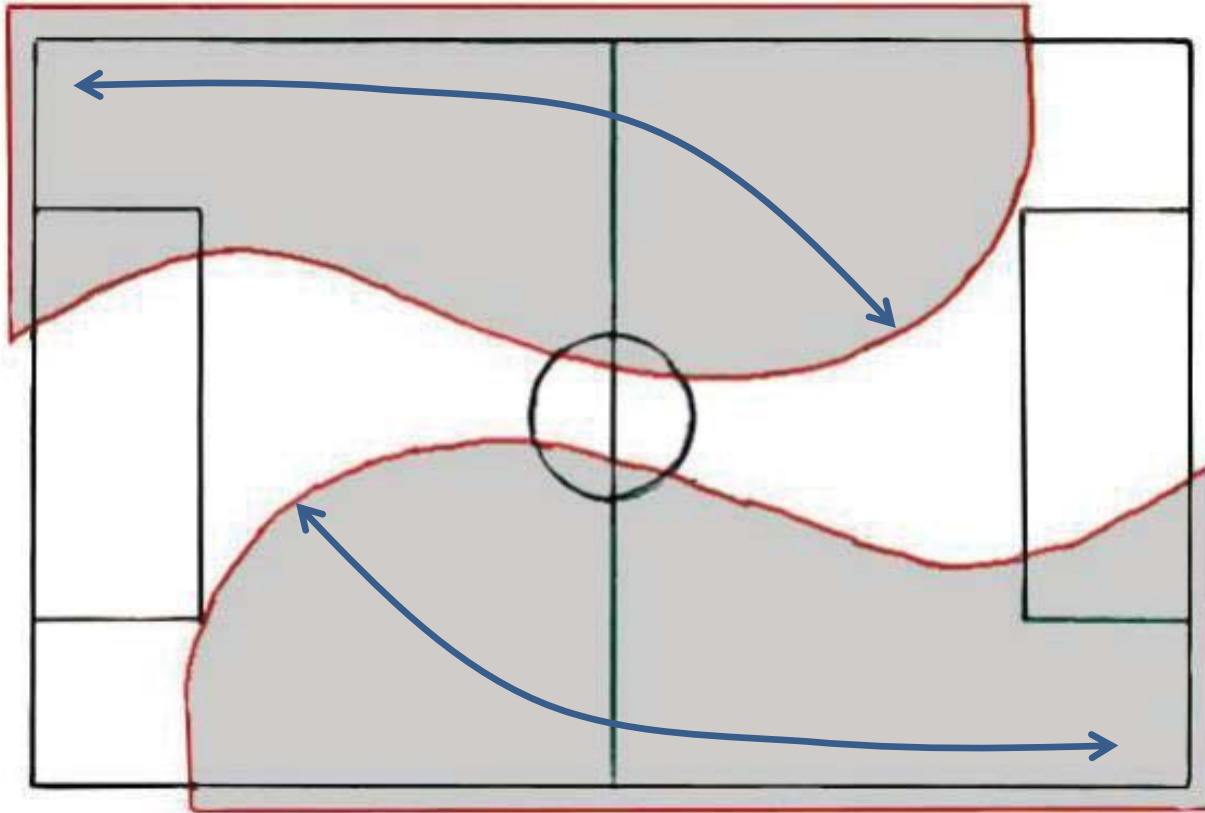
### Lead whistles start

Corner kick  
Free kick  
Throw In (Lead side)

Kickoffs – Lead Referee has the clock and the Trail Referee has the whistle.

# Positioning

## No Touchline Hugging

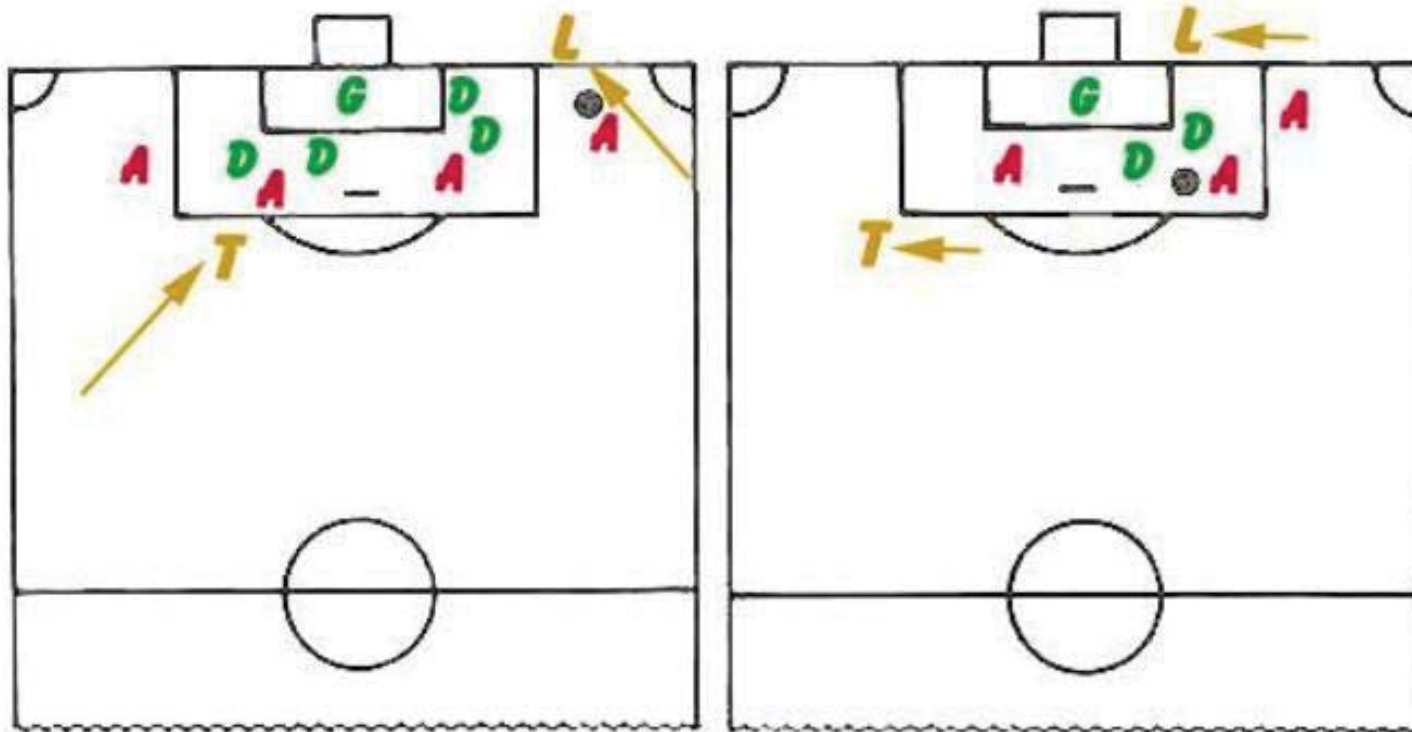


**Flexible Pattern – requires high work rate to stay close enough to play and still be able to cover the offside decision**

The Trail Referee become the “CR” as play moves toward the goal, but must be ready to get back to the other end to call offside when play turns around.

# Positioning

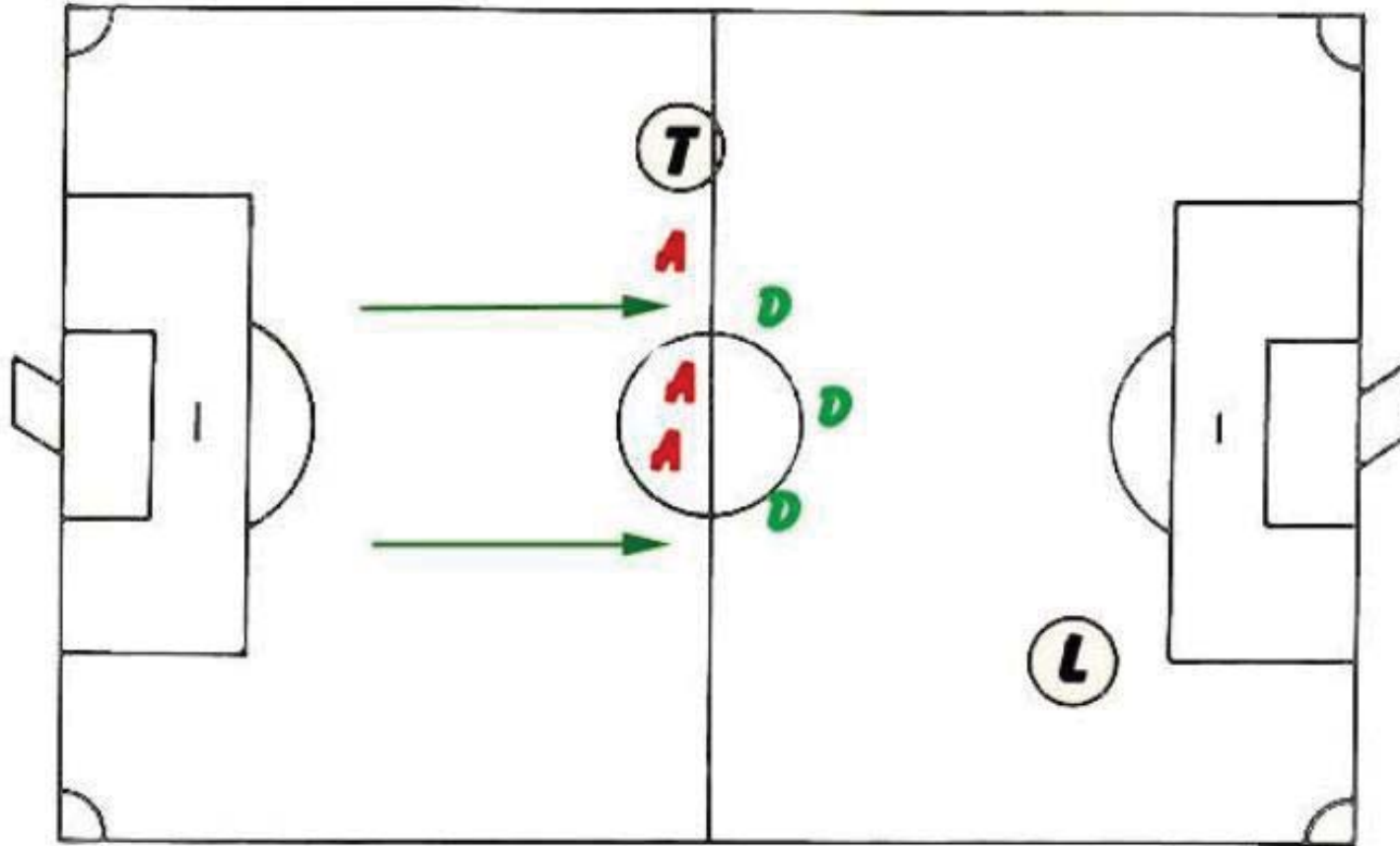
## Play near the goal



*Lead referee across the goal may be necessary, but may also compromise the offside decision.*

# Positioning

## Start of Play



# Positioning

During Play



Free Kick



# Positioning

## Free Kick in Attacking Half

### Trail referee:

Moves even with ball

### Covers:

placement  
encroachment  
delays

*(Restart whistle when ceremonial. Ensure Lead is in position.)*

### Lead referee:

Moves ahead for  
Play/goal coverage

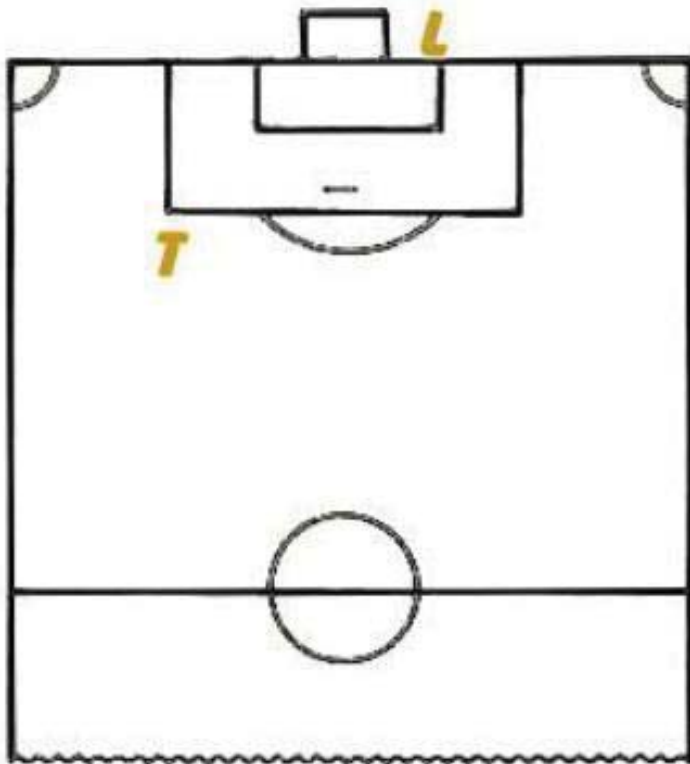
*(Eye contact or repeat DKF/IFK signal to show readiness.)*



*A quick restart will be a positioning challenge*

# Positioning

Corner Kick



Goalkeeper Clearance





# Positioning

Goal Kick



Penalty kick



# Positioning

## Throw In

